

# TOOLING SYSTEMS

**EXSYS**  
**AUTOMATION**

IF LOW UNIT COSTS ARE MORE IMPORTANT  
FOR YOU THAN BIG PROMISES:

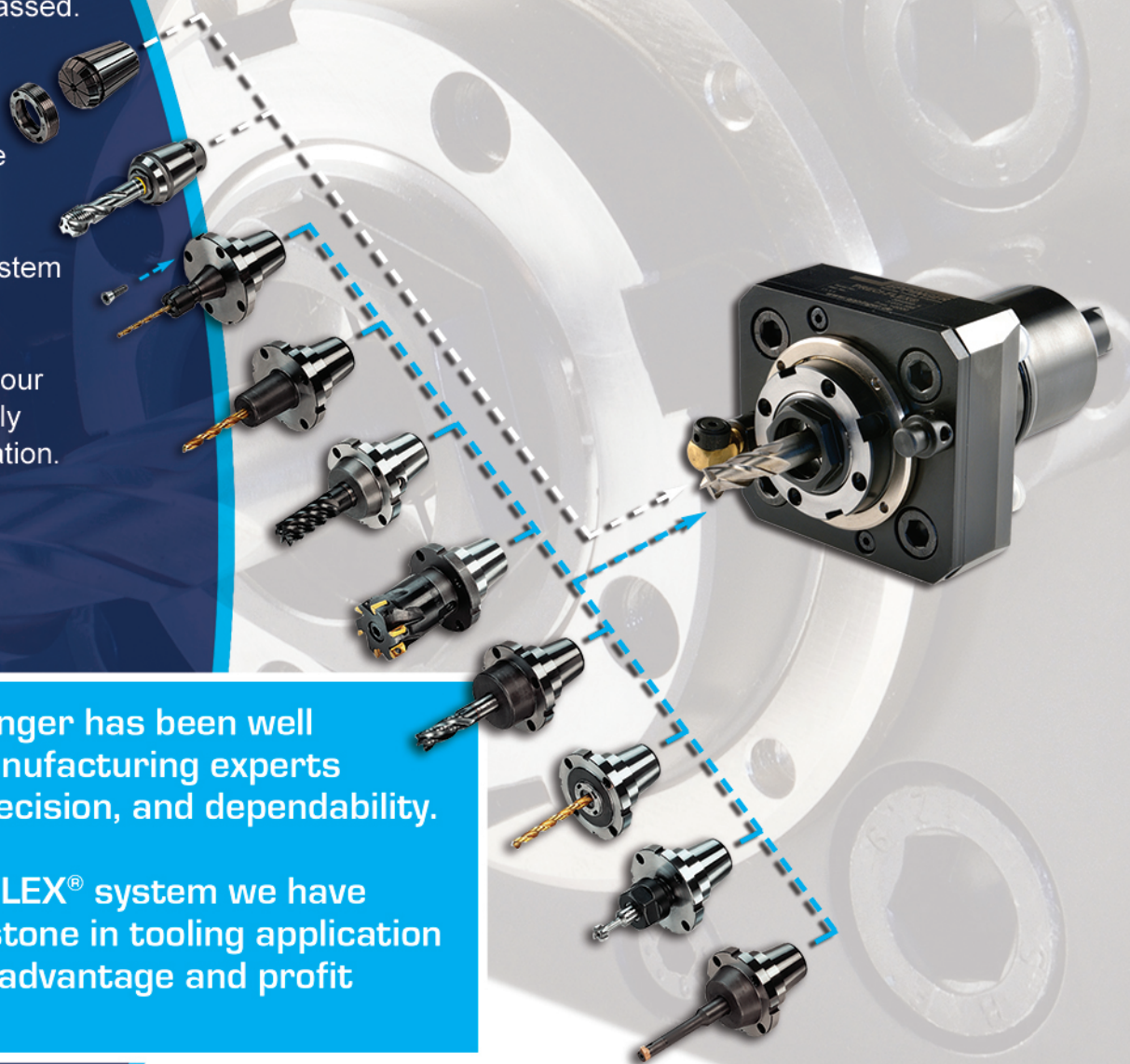
**PRECI-FLEX®**

The PRECI-FLEX® interchange system makes lathe tooling change-overs quick, accurate and economical. Our highly precise repeatability is unsurpassed. Other interchangeable tooling systems cannot achieve this due to their inaccurate interfaces.

Eppinger's modular system adds a new dimension to high precision flexibility. The basis of our interface is a universally utilized collet configuration. The advantages speak for themselves.

For decades Eppinger has been well known among manufacturing experts for innovation, precision, and dependability.

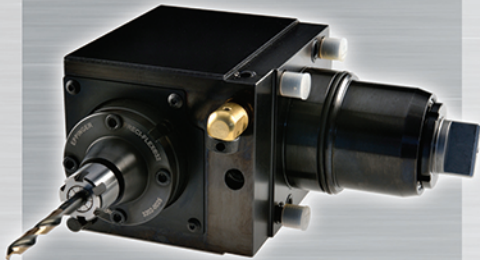
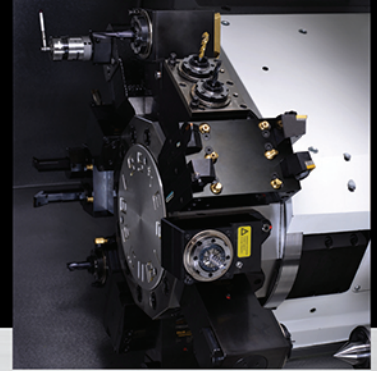
With our PRECI-FLEX® system we have set another milestone in tooling application technology. Take advantage and profit from it.





# TOOLING SYSTEMS

THE FIRST AND ONLY TOOLING SYSTEM  
USING A SINGLE BASE HOLDER FOR COLLET  
AND MULTIPLE OTHER TOOLING ADAPTERS.

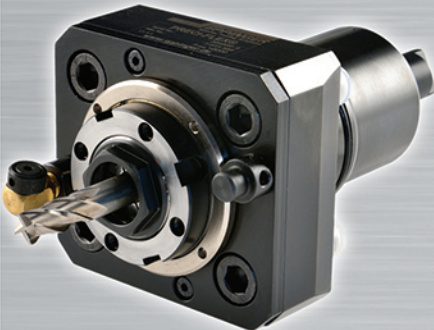


## Precise

A conical and flat face planar interface ensures highest accuracy and rigidity.

## Compact

Our short design assures maximum torque transmission and rigidity, resulting in increased machining accuracy and consequently improved productivity.



## Flexible

It's practical and simple to use. Collets, endmill holders, expanding collet chucks, shrink fit tooling, Capto, and KM systems, to name just a few, can all be mounted on a single base holder.

## Economical

Reduced requirements for special application tooling by using standard fixed and rotary base holders result in tremendously lower total tooling cost.



## Fast

Interchanging pre-set tools reduce expensive machine downtime to almost nothing.

## Universal

Tooling adapters may be interchanged between fixed and rotary base holders.

Detailed information is available to you for the asking. We are delighted to support you in the selection of our modern tooling system for your productivity improvements.

**EXSYS**  
AUTOMATION

EXSYS Automation, Inc.  
15200 Citrus Country Drive  
Dade City, Florida 33523  
Ph: 352.588.4345 F: 352.588.4821  
[www.exsysautomation.com](http://www.exsysautomation.com)